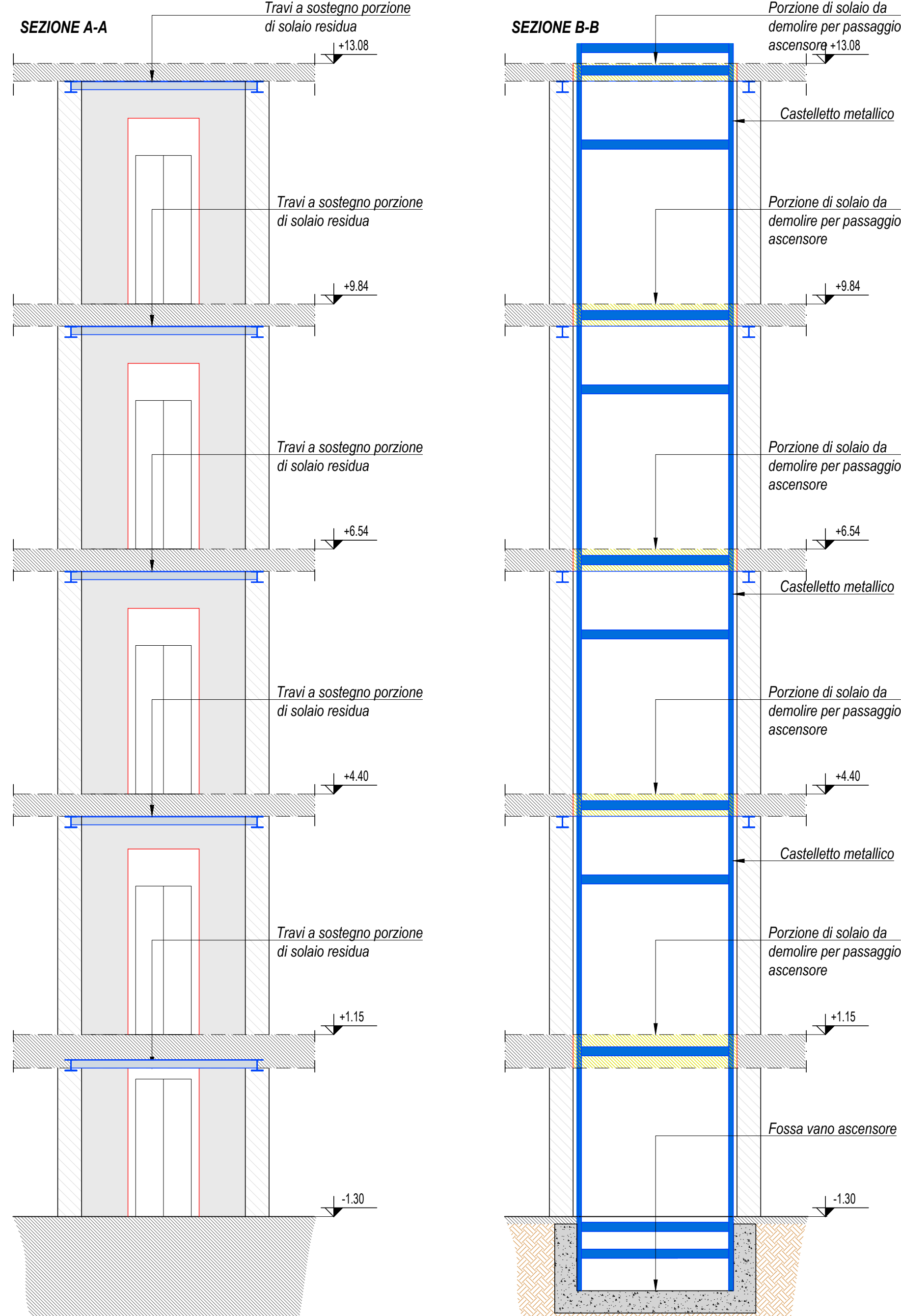
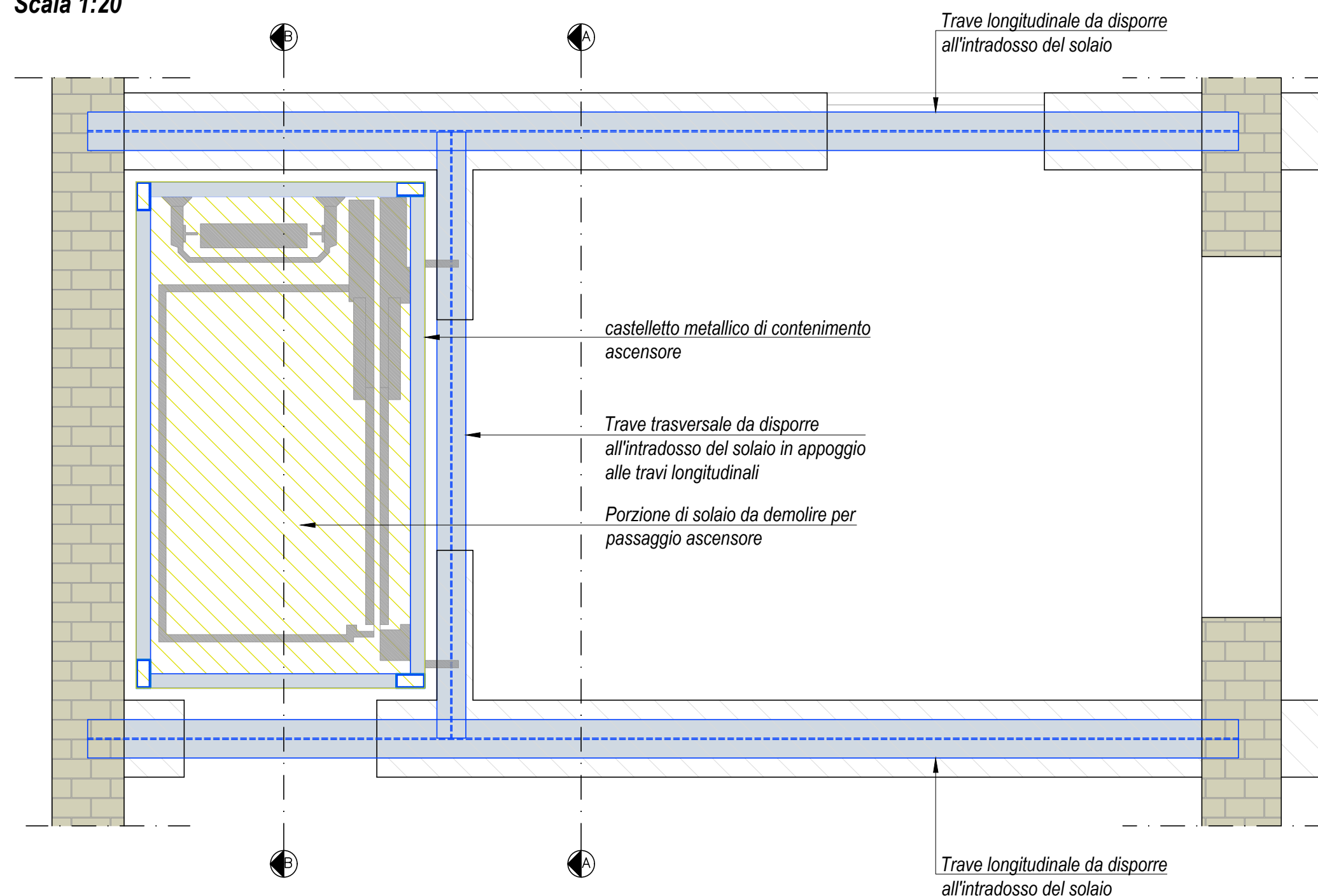
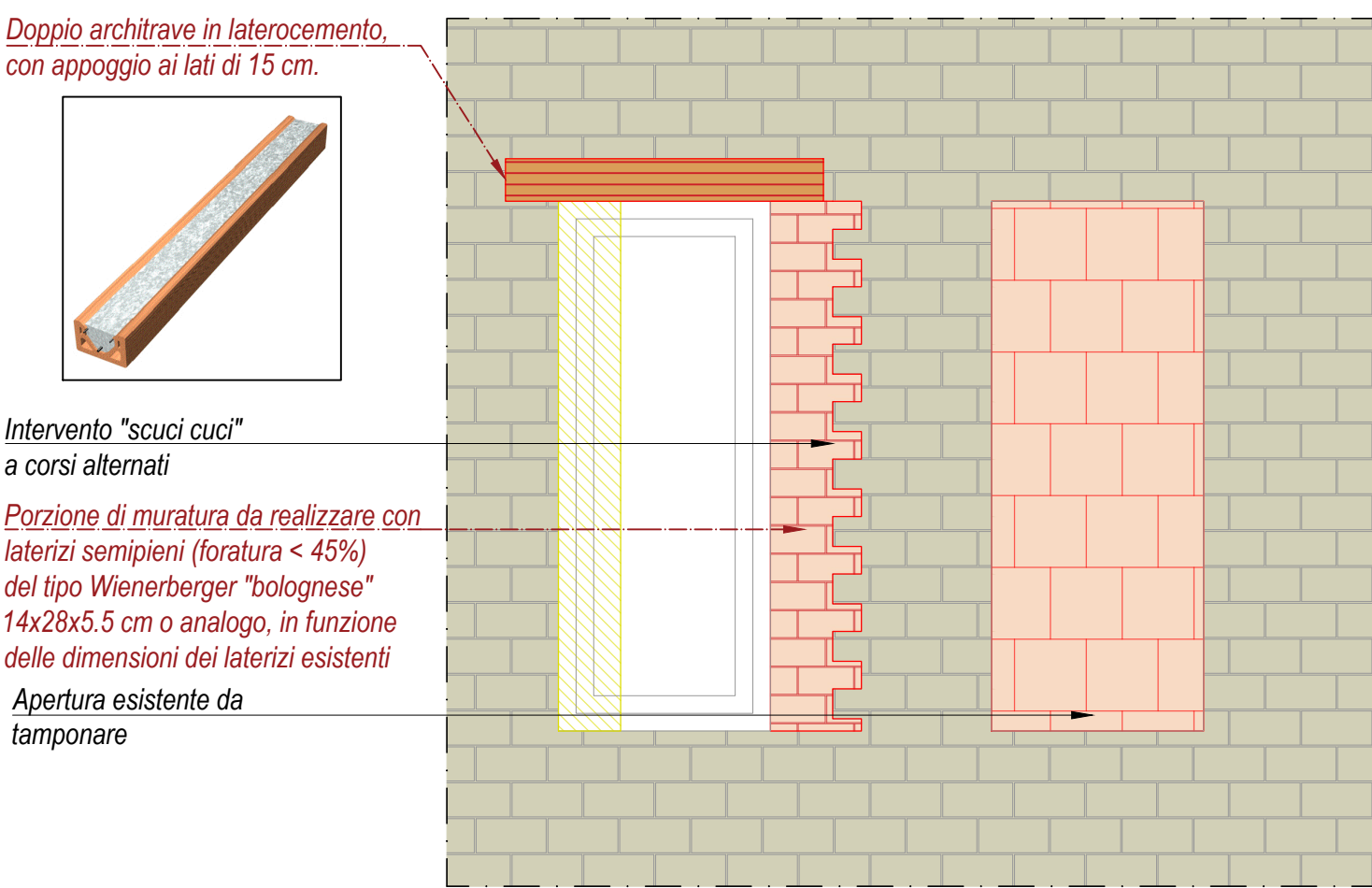


INTERVENTO 1_Inserimento vano ascensore

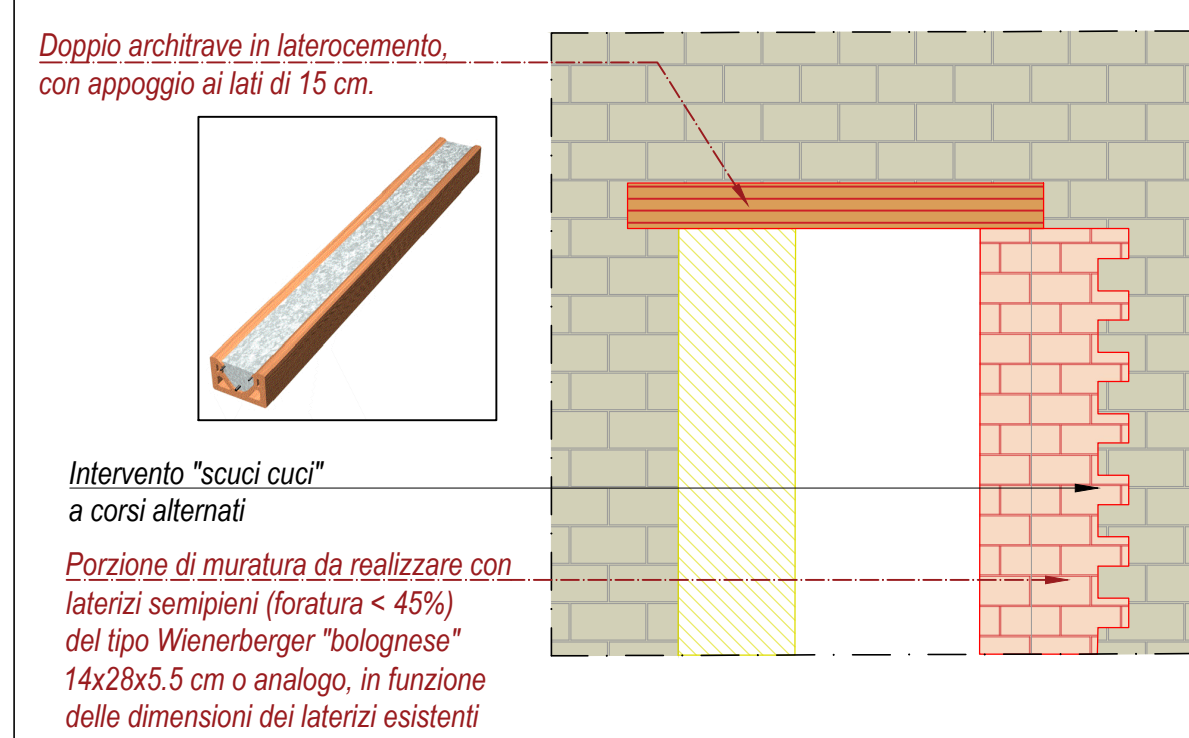
Stralcio pianta piano tipo
Scala 1:20



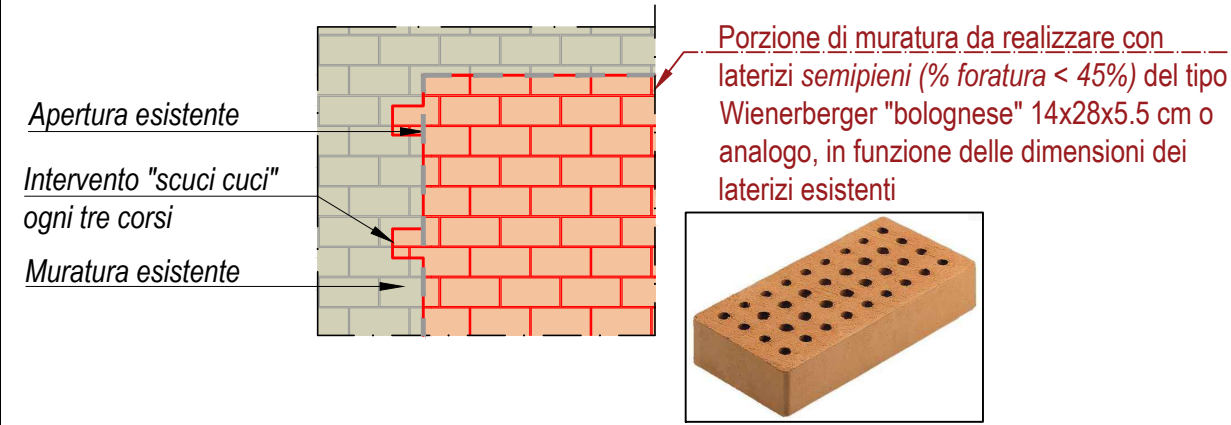
INTERVENTO 3_Modifica finestra esistente e chiusura finestra esistente
scala 1:20



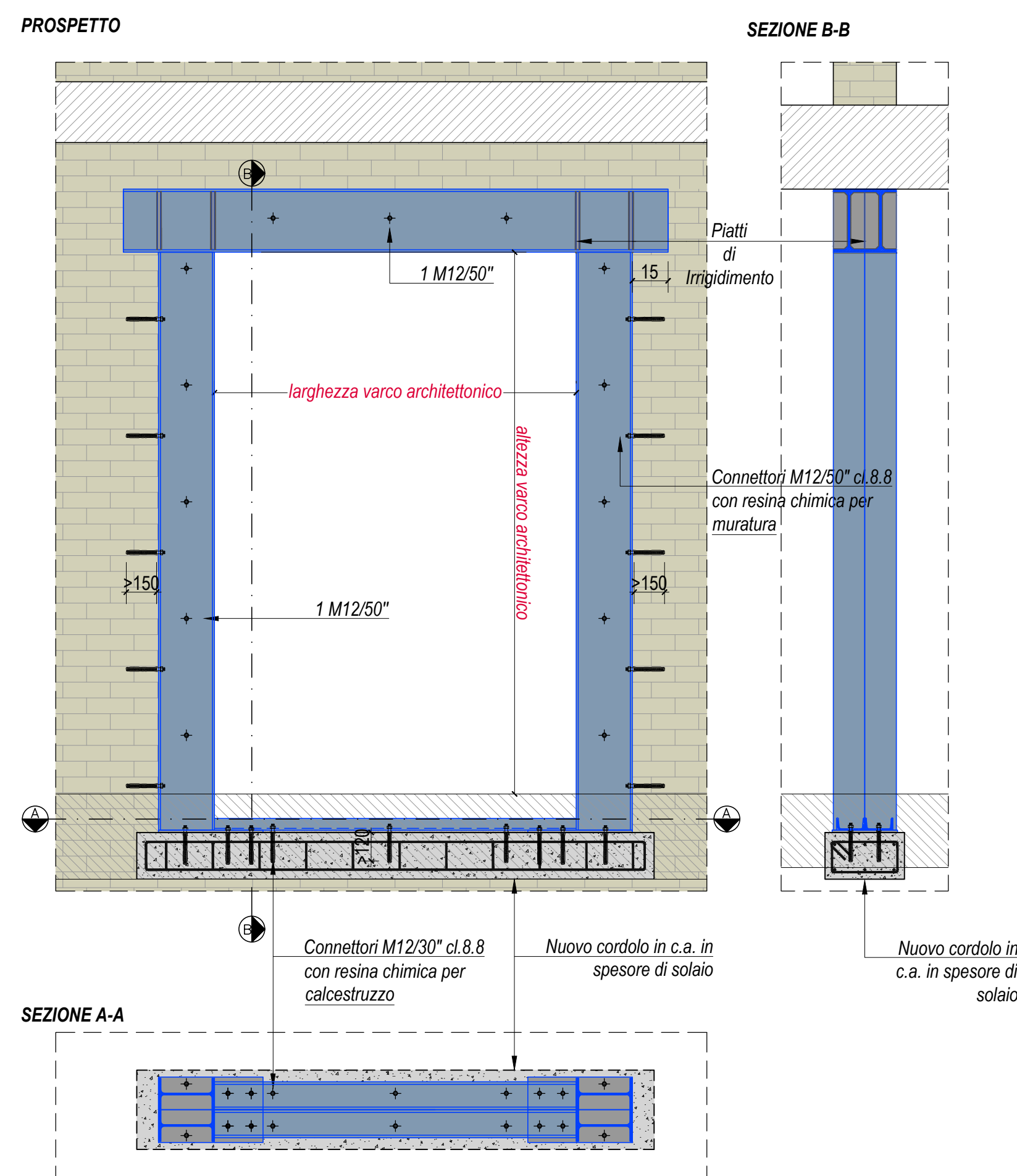
INTERVENTO 4_Modifica apertura esistente e nuovo architrave in laterocemento
scala 1:20



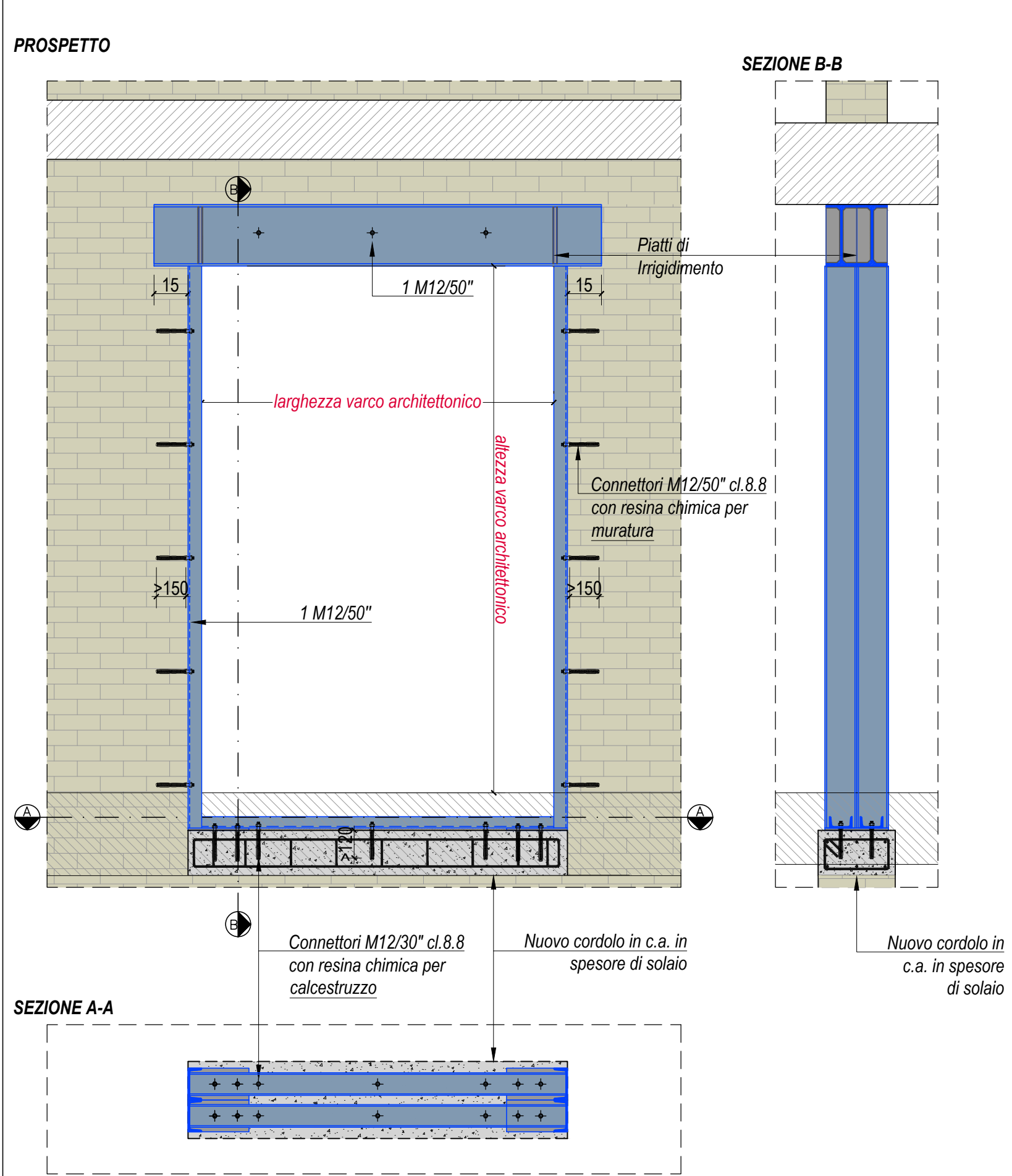
INTERVENTO 5_Chiusura apertura esistente mediante cucì-scuci
scala 1:20



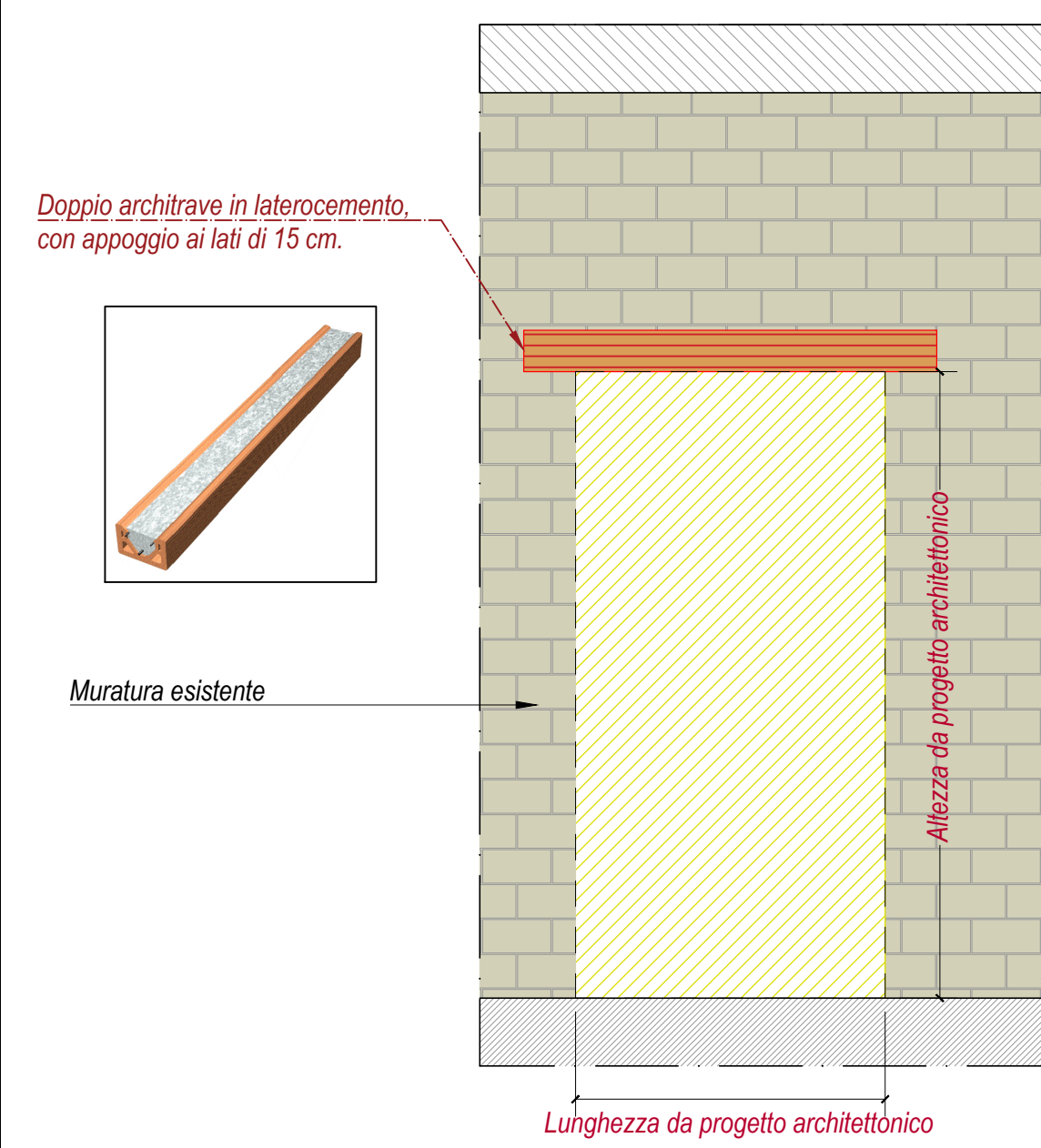
INTERVENTO 6_Inserimento cerchiatura metallica
scala 1:20



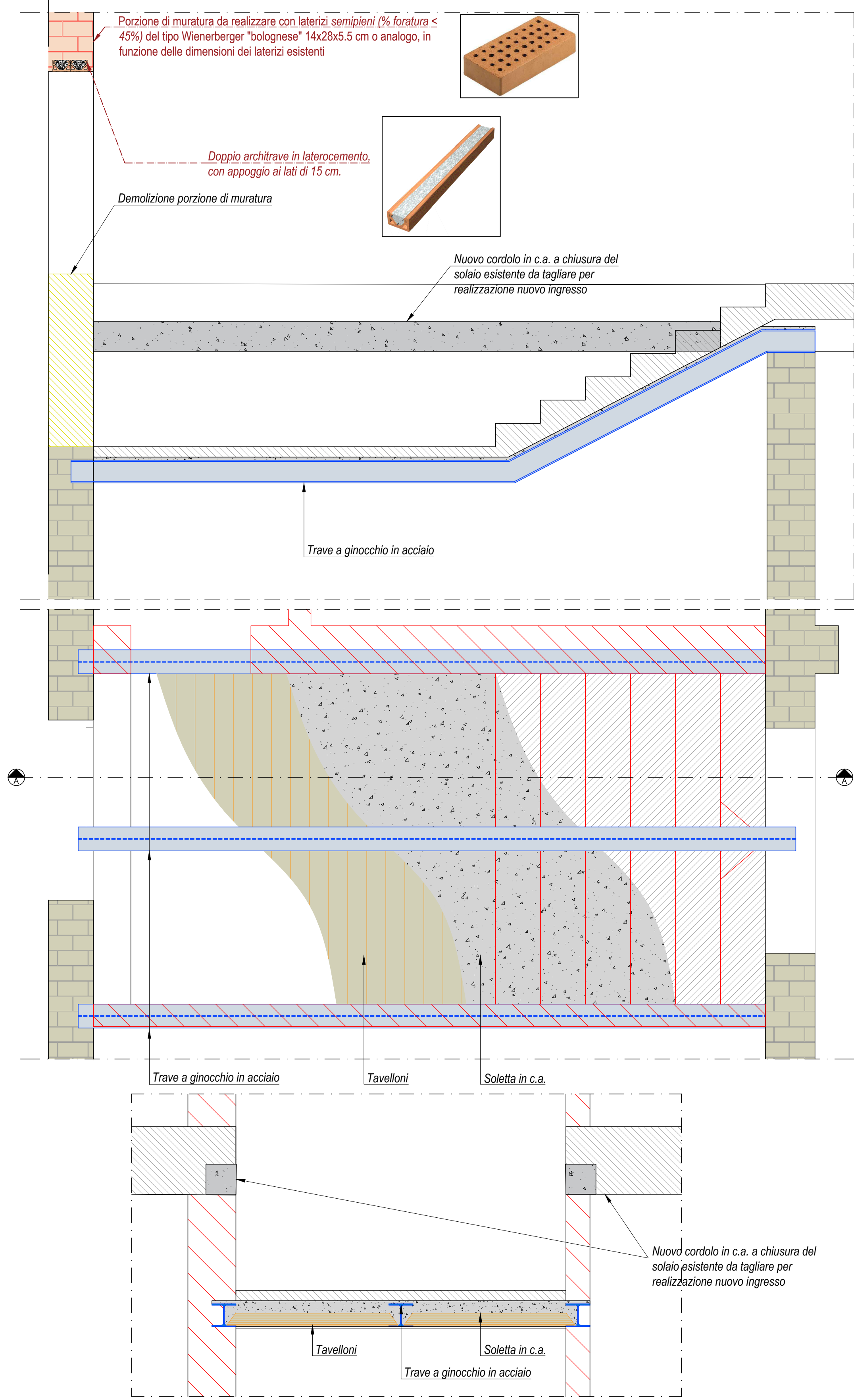
INTERVENTO 7_Inserimento cerchiatura metallica
scala 1:20



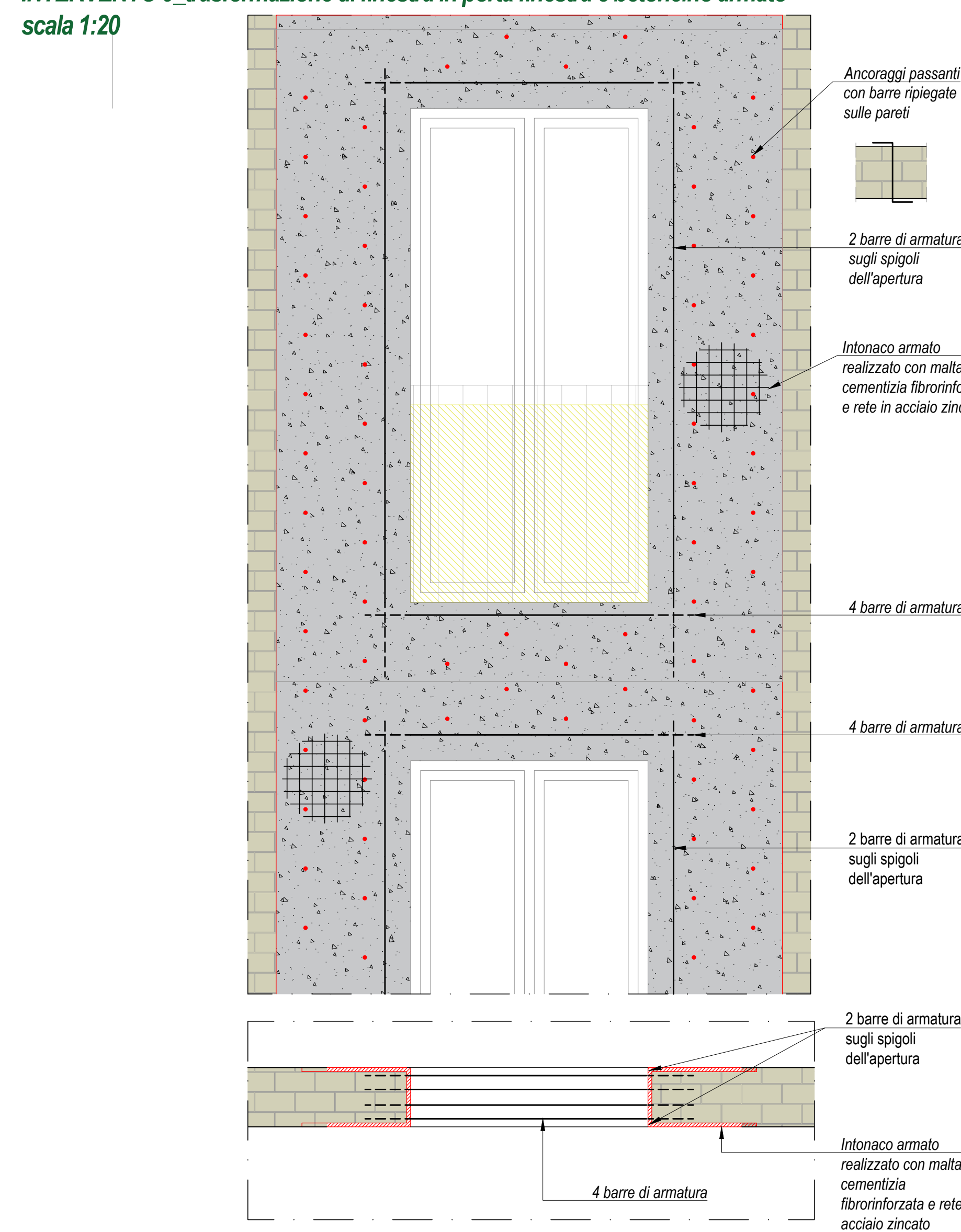
INTERVENTO 8_Realizzazione di nuova apertura con inserimento di architrave in laterocemento
scala 1:20



INTERVENTO 2_Realizzazione di nuovo ingresso
scala 1:20



INTERVENTO 9_trasformazione di finestra in porta finestra e betoncino armato
scala 1:20



INTERVENTO 10_Modifica finestra esistente scala 1:20

